

**PRINCE McVEIGH AND THE TURNER BLASPHEMIES
& THE BOOK OF HOURS**

October 29 – December 18, 2021

Sikkema Jenkins & Co. is pleased to present a solo exhibition of work by Kara Walker, featuring the narrative film *Prince McVeigh and the Turner Blasphemies*, and a selection from *Book of Hours*, a continuing series of works on paper. The exhibition will be on view October 29 through December 18, 2021.

Prince McVeigh and the Turner Blasphemies is a 12-minute stop-motion animation that subverts and reframes the visual presentation of modern American mythmaking. Walker's cut-paper silhouettes reenact several of the most gruesome and infamous acts of white supremacist violence in the country's recent history, including the 1995 Oklahoma City bombing by Timothy McVeigh and the 1998 murder of James Byrd Jr. Inspired by the saturation of white supremacist rhetoric within the mainstream political discourse of the past four years, the film's creation found prescient relevance during the January 6 insurrection on the US capitol. *Prince McVeigh and the Turner Blasphemies* is an unflinching interrogation of how radical figures and ideologies ingratiate themselves within the national consciousness.

The title references the 1926 feature film *The Adventures of Prince Achmed*, by the German director and pioneer silhouette animator Lotte Reiniger, and *The Turner Diaries*, a 1978 fiction novel describing a race war and the eventual mass extermination of all non-white peoples across the world. *The Turner Diaries* has been noted as one of the most influential texts within contemporary far-right extremist movements and was cited as inspiration by McVeigh himself. The expansive score was composed by Minneapolis-based musician and artist Lady Midnight to encompass a variety of genres. The shifting orchestrations of marching band, ragtime, soul, and rock melodies intensify the narrative's propulsive, cinematic tone. Walker's film is a subversive response to the idealized conceptions of nation building and the presumed consistent upward progress of justice; *Prince McVeigh and the Turner Blasphemies* illustrates how the reverberations of history maintain, reproduce, and amplify systems of oppression and structural violence within the present-day.

The ongoing *Book of Hours* series encompasses several suites of works on paper, with the first produced in 2020 during the coronavirus pandemic. The title of the series bears multiple meanings, in reference to the devotional books of the Christian tradition, the near-surreal passage of time amid the pandemic, and the time Walker devoted to the act of drawing itself. In graphite, watercolor, gouache and sumi-e ink, the drawings illuminate the force of entropy of our current moment, and the constant blurring of reality and myth. Yet for Walker, drawing is an act of hope; a dedication of attention, an intimate gesture of making against the constant unmaking of coherency and logic within the world around us.

Born in Stockton, California in 1969, Kara Walker was raised in Atlanta, Georgia from the age of 13. She studied at the Atlanta College of Art (BFA, 1991) and the Rhode Island School of Design (MFA, 1994). She is the recipient of many awards, notably the John D. and Catherine T. MacArthur Foundation Achievement Award in 1997 and the United States Artists, Eileen Harris Norton Fellowship in 2008. Walker is a member of the American Academy of Arts and Letters (elected 2012) and American Philosophical Society (elected 2018) and was named an Honorary Royal Academician by the Royal Academy of Arts, London in 2019. She lives and works in New York.

Walker's work is in the collection of prominent museums and public collections throughout the United States and Europe, including the Kunstmuseum Basel's Kupferstichkabinett (Department of Prints and Drawings); the Solomon R. Guggenheim Museum, New York; the Museum of Modern Art, New York; the Metropolitan Museum of Art, New York; the Tate Gallery, London; the Museo Nazionale delle Arti del XXI secolo (MAXXI), Rome; and the Deutsche Bank Collection, Frankfurt. Walker was selected by the Tate Modern for the 2019 Hyundai Commission. She responded with a large-scale public sculpture in the form of a four-tiered fountain entitled *Fons Americanus*. Directly alluding to the Victoria Memorial at Buckingham Palace, Walker's sculpture stands as a "counter-memorial," a playful yet incisive subversion of such monuments' original public function within the context of European imperialist projects.

UPCOMING EXHIBITIONS:

MARIA NEPOMUCENO

JANUARY 8 – FEBRUARY 19, 2021

UPCOMING ART FAIRS:

ART BASEL MIAMI BEACH

DECEMBER 2 – 5, 2021

For additional information please contact Scott Briscoe at 212.929.2262 or scott@sikkemajenkinsco.com.

KARA WALKER

PRICE McVEIGH AND THE TURNER BLASPHEMIES & THE BOOK OF HOURS

October 29 – December 18, 2021

BACK GALLERY A (clockwise from left):

1.



Book of Hours (2020), 2020

Graphite, watercolor, gouache, and sumi-e ink on paper
From a suite of 11, vertical and horizontal: 11.25 x 15.125 inches (28.6 x 38.4 cm),
9 x 12 inches (22.9 x 30.5 cm), 7.5 x 6.125 inches (19.1 x 15.6 cm), 13 x 9.5
inches (33 x 24.1 cm)

KW 19767

2.



Book of Hours (Summer), 2021

Graphite, watercolor, gouache, and sumi-e ink on paper
From a suite of 8: 9 x 12 inches (22.9 x 30.5 cm) each

KW 19766

3.



Book of Hours (Summer), 2021

Graphite, watercolor, gouache, and sumi-e ink on paper
From a suite of 8: 9 x 12 inches (22.9 x 30.5 cm) each

KW 19766

4.



Book of Hours (Summer), 2021

Graphite, watercolor, gouache, and sumi-e ink on paper
From a suite of 8: 9 x 12 inches (22.9 x 30.5 cm) each

KW 19766

5.



The Spotlight, 2021

Graphite, watercolor, gouache, and sumi-e ink on paper
22.5 x 30 inches

57.1 x 76.2 cm

KW 19788

6.



Ecstatic Group, 2021

Graphite, watercolor, gouache, and sumi-e ink on paper
30 x 22.5 inches
76.2 x 57.1 cm
KW 19776

7.



Book of Hours (2020), 2020

Graphite, watercolor, gouache, and sumi-e ink on paper
From suite of 11, vertical and horizontal: 11.25 x 15.125 inches (28.6 x 38.4 cm),
9 x 12 inches (22.9 x 30.5 cm), 7.5 x 6.125 inches (19.1 x 15.6 cm),
13 x 9.5 inches (33 x 24.1 cm)
KW 19767

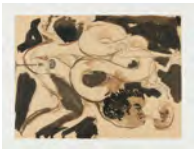
8.



Book of Hours (Summer), 2021

Graphite, watercolor, gouache, and sumi-e ink on paper
From a suite of 8: 9 x 12 inches (22.9 x 30.5 cm) each
KW 19766

9.



Embryonic, 2020

Graphite, watercolor, gouache, and sumi-e ink on paper
22.5 x 30 inches
57.1 x 76.2 cm
KW 19795

10.



Book of Hours (Summer), 2021

Graphite, watercolor, gouache, and sumi-e ink on paper
From a suite of 8: 9 x 12 inches (22.9 x 30.5 cm) each
KW 19766

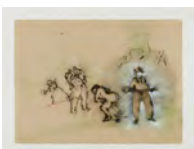
11.



Book of Hours (Summer), 2021

Graphite, watercolor, gouache, and sumi-e ink on paper
From a suite of 8: 9 x 12 inches (22.9 x 30.5 cm) each
KW 19766

12.



It Comes to This, 2020

Graphite, watercolor, gouache, and sumi-e ink on paper
22.5 x 30 inches
57.1 x 76.2 cm
KW 19783

13.



Family Group, 2021

Graphite, watercolor, gouache, and sumi-e ink on paper

30 x 22.5 inches

76.2 x 57.1 cm

KW 19775

14.



Book of Hours (2020), 2020

Graphite, watercolor, gouache, and sumi-e ink on paper

From a suite of 11, vertical and horizontal: 11.25 x 15.125 inches (28.6 x 38.4 cm),

9 x 12 inches (22.9 x 30.5 cm), 7.5 x 6.125 inches (19.1 x 15.6 cm), 13 x 9.5

inches (33 x 24.1 cm)

KW 19767

15.



Book of Hours (Summer), 2021

Graphite, watercolor, gouache, and sumi-e ink on paper

From a suite of 8: 9 x 12 inches (22.9 x 30.5 cm) each

KW 19766

16.



Book of Hours (2020), 2020

Graphite, watercolor, gouache, and sumi-e ink on paper

From a suite of 11, vertical and horizontal: 11.25 x 15.125 inches (28.6 x 38.4 cm),

9 x 12 inches (22.9 x 30.5 cm), 7.5 x 6.125 inches (19.1 x 15.6 cm), 13 x 9.5

inches (33 x 24.1 cm)

KW 19767

17.



3am Vision, 2021

Graphite, watercolor, gouache, and sumi-e ink on paper

19.5 x 62.25 inches

49.5 x 158.1 cm

KW 19765

18.



Book of Hours (2020), 2020

Graphite, watercolor, gouache, and sumi-e ink on paper

From a suite of 11, vertical and horizontal: 11.25 x 15.125 inches (28.6 x 38.4 cm),

9 x 12 inches (22.9 x 30.5 cm), 7.5 x 6.125 inches (19.1 x 15.6 cm), 13 x 9.5

inches (33 x 24.1 cm)

KW 19767

19.



Book of Hours (Self and other), 2021

Graphite, watercolor, gouache, and sumi-e ink on paper, cut paper

From a suite of 11, vertical and horizontal: 11.25 x 15.125 inches (28.6 x 38.4 cm),
13.5 x 11.5 inches (34.3 x 29.2 cm), 14.5 x 8.5 inches (36.8 x 21.6 cm)

11.25 x 7.5 inches (28.6 x 19.1 cm), 19 x 15 inches (48.3 x 38.1 cm)

KW 19768

20.



Book of Hours (Self and other), 2021

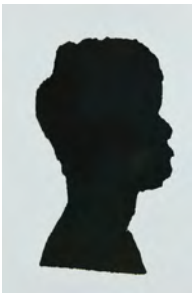
Graphite, watercolor, gouache, and sumi-e ink on paper, cut paper

From a suite of 11, vertical and horizontal: 11.25 x 15.125 inches (28.6 x 38.4 cm),
13.5 x 11.5 inches (34.3 x 29.2 cm), 14.5 x 8.5 inches (36.8 x 21.6 cm)

11.25 x 7.5 inches (28.6 x 19.1 cm), 19 x 15 inches (48.3 x 38.1 cm)

KW 19768

21.



Book of Hours (Self and other), 2021

Graphite, watercolor, gouache, and sumi-e ink on paper, cut paper

From a suite of 11, vertical and horizontal: 11.25 x 15.125 inches (28.6 x 38.4 cm),
13.5 x 11.5 inches (34.3 x 29.2 cm), 14.5 x 8.5 inches (36.8 x 21.6 cm)

11.25 x 7.5 inches (28.6 x 19.1 cm), 19 x 15 inches (48.3 x 38.1 cm)

KW 19768

22.



Book of Hours (Self and other), 2021

Graphite, watercolor, gouache, and sumi-e ink on paper, cut paper

From a suite of 11, vertical and horizontal: 11.25 x 15.125 inches (28.6 x 38.4 cm),
13.5 x 11.5 inches (34.3 x 29.2 cm), 14.5 x 8.5 inches (36.8 x 21.6 cm)

11.25 x 7.5 inches (28.6 x 19.1 cm), 19 x 15 inches (48.3 x 38.1 cm)

KW 19768

23.



Untitled, 2021

Graphite, watercolor, gouache, and sumi-e ink on paper

22.5 x 30 inches

57.1 x 76.2 cm

KW 19787

24.



Book of Hours (Self and other), 2021

Graphite, watercolor, gouache, and sumi-e ink on paper, cut paper

From a suite of 11, vertical and horizontal: 11.25 x 15.125 inches (28.6 x 38.4 cm),
13.5 x 11.5 inches (34.3 x 29.2 cm), 14.5 x 8.5 inches (36.8 x 21.6 cm)

11.25 x 7.5 inches (28.6 x 19.1 cm), 19 x 15 inches (48.3 x 38.1 cm)

KW 19768

25.



Book of Hours (Self and other), 2021

Graphite, watercolor, gouache, and sumi-e ink on paper, cut paper

From a suite of 11, vertical and horizontal: 11.25 x 15.125 inches (28.6 x 38.4 cm),
13.5 x 11.5 inches (34.3 x 29.2 cm), 14.5 x 8.5 inches (36.8 x 21.6 cm)

11.25 x 7.5 inches (28.6 x 19.1 cm), 19 x 15 inches (48.3 x 38.1 cm)

KW 19768

26.



Book of Hours (2020), 2020

Graphite, watercolor, gouache, and sumi-e ink on paper

From a suite of 11, vertical and horizontal: 11.25 x 15.125 inches (28.6 x 38.4 cm),
9 x 12 inches (22.9 x 30.5 cm), 7.5 x 6.125 inches (19.1 x 15.6 cm), 13 x 9.5
inches (33 x 24.1 cm)

KW 19767

27.



Book of Hours (Self and other), 2021

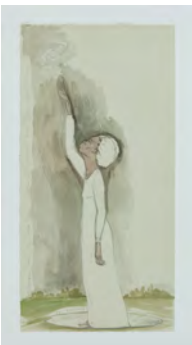
Graphite, watercolor, gouache, and sumi-e ink on paper, cut paper

From a suite of 11, vertical and horizontal: 11.25 x 15.125 inches (28.6 x 38.4 cm),
13.5 x 11.5 inches (34.3 x 29.2 cm), 14.5 x 8.5 inches (36.8 x 21.6 cm)

11.25 x 7.5 inches (28.6 x 19.1 cm), 19 x 15 inches (48.3 x 38.1 cm)

KW 19768

28.



Tall Woman, 2020

Graphite, watercolor, gouache, and sumi-e ink on paper

22.25 x 11.25 inches

56.5 x 28.6 cm

KW 19773

29.



Book of Hours (2020), 2020

Graphite, watercolor, gouache, and sumi-e ink on paper

From a suite of 11, vertical and horizontal: 11.25 x 15.125 inches (28.6 x 38.4 cm), 9 x 12 inches (22.9 x 30.5 cm), 7.5 x 6.125 inches (19.1 x 15.6 cm), 13 x 9.5 inches (33 x 24.1 cm)

KW 19767

30.



Book of Hours (Self and other), 2021

Graphite, watercolor, gouache, and sumi-e ink on paper, cut paper

From a suite of 11, vertical and horizontal: 11.25 x 15.125 inches (28.6 x 38.4 cm), 13.5 x 11.5 inches (34.3 x 29.2 cm), 14.5 x 8.5 inches (36.8 x 21.6 cm)

11.25 x 7.5 inches (28.6 x 19.1 cm), 19 x 15 inches (48.3 x 38.1 cm)

KW 19768

31.



Apothecary, 2020

Graphite, watercolor, gouache, and sumi-e ink on paper

22.5 x 30 inches

57.1 x 76.2 cm

KW 19789

32.



Book of Hours (Summer), 2021

Graphite, watercolor, gouache, and sumi-e ink on paper

From a suite of 8: 9 x 12 inches each (22.9 x 30.5 cm)

KW 19766

33.



Book of Hours (2020), 2020

Graphite, watercolor, gouache, and sumi-e ink on paper

From a suite of 11, vertical and horizontal: 11.25 x 15.125 inches (28.6 x 38.4 cm), 9 x 12 inches (22.9 x 30.5 cm), 7.5 x 6.125 inches (19.1 x 15.6 cm), 13 x 9.5 inches (33 x 24.1 cm)

KW 19767

34.



Book of Hours (Self and other), 2021

Graphite, watercolor, gouache, and sumi-e ink on paper, cut paper

From a suite of 11, vertical and horizontal: 11.25 x 15.125 inches (28.6 x 38.4 cm), 13.5 x 11.5 inches (34.3 x 29.2 cm), 14.5 x 8.5 inches (36.8 x 21.6 cm)

11.25 x 7.5 inches (28.6 x 19.1 cm), 19 x 15 inches (48.3 x 38.1 cm)

KW 19768

35.



Book of Hours (Self and other), 2021

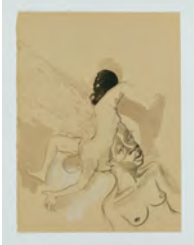
Graphite, watercolor, gouache, and sumi-e ink on paper, cut paper

From a suite of 11, vertical and horizontal: 11.25 x 15.125 inches (28.6 x 38.4 cm),
13.5 x 11.5 inches (34.3 x 29.2 cm), 14.5 x 8.5 inches (36.8 x 21.6 cm)

11.25 x 7.5 inches (28.6 x 19.1 cm), 19 x 15 inches (48.3 x 38.1 cm)

KW 19768

36.



Book of Hours (Self and other), 2021

Graphite, watercolor, gouache, and sumi-e ink on paper, cut paper

From a suite of 11, vertical and horizontal: 11.25 x 15.125 inches (28.6 x 38.4 cm),
13.5 x 11.5 inches (34.3 x 29.2 cm), 14.5 x 8.5 inches (36.8 x 21.6 cm)

11.25 x 7.5 inches (28.6 x 19.1 cm), 19 x 15 inches (48.3 x 38.1 cm)

KW 19768

37.



Book of Hours (2020), 2020

Graphite, watercolor, gouache, and sumi-e ink on paper

From a suite of 11, vertical and horizontal: 11.25 x 15.125 inches (28.6 x 38.4 cm),
9 x 12 inches (22.9 x 30.5 cm), 7.5 x 6.125 inches (19.1 x 15.6 cm), 13 x 9.5
inches (33 x 24.1 cm)

KW 19767

38.



Book of Hours (2020), 2020

Graphite, watercolor, gouache, and sumi-e ink on paper

From a suite of 11, vertical and horizontal: 11.25 x 15.125 inches (28.6 x 38.4 cm),
9 x 12 inches (22.9 x 30.5 cm), 7.5 x 6.125 inches (19.1 x 15.6 cm), 13 x 9.5
inches (33 x 24.1 cm)

KW 19767

39.



Book of Hours (2020), 2020

Graphite, watercolor, gouache, and sumi-e ink on paper

From a suite of 11, vertical and horizontal: 11.25 x 15.125 inches (28.6 x 38.4 cm),
9 x 12 inches (22.9 x 30.5 cm), 7.5 x 6.125 inches (19.1 x 15.6 cm), 13 x 9.5
inches (33 x 24.1 cm)

KW 19767

40.



Wokey Wokey, 2021

Graphite, watercolor, gouache, and sumi-e ink on paper

22.5 x 30 inches

57.1 x 76.2 cm

KW 19774

BACK GALLERY B (clockwise from left):

41.



Prince McVeigh and the Turner Blasphemies, 2021
Video, color, sound: original score by Lady Midnight
12 minutes, 6 seconds
Edition of 5
KW 19702

** Video contains flashing and strobing lights*